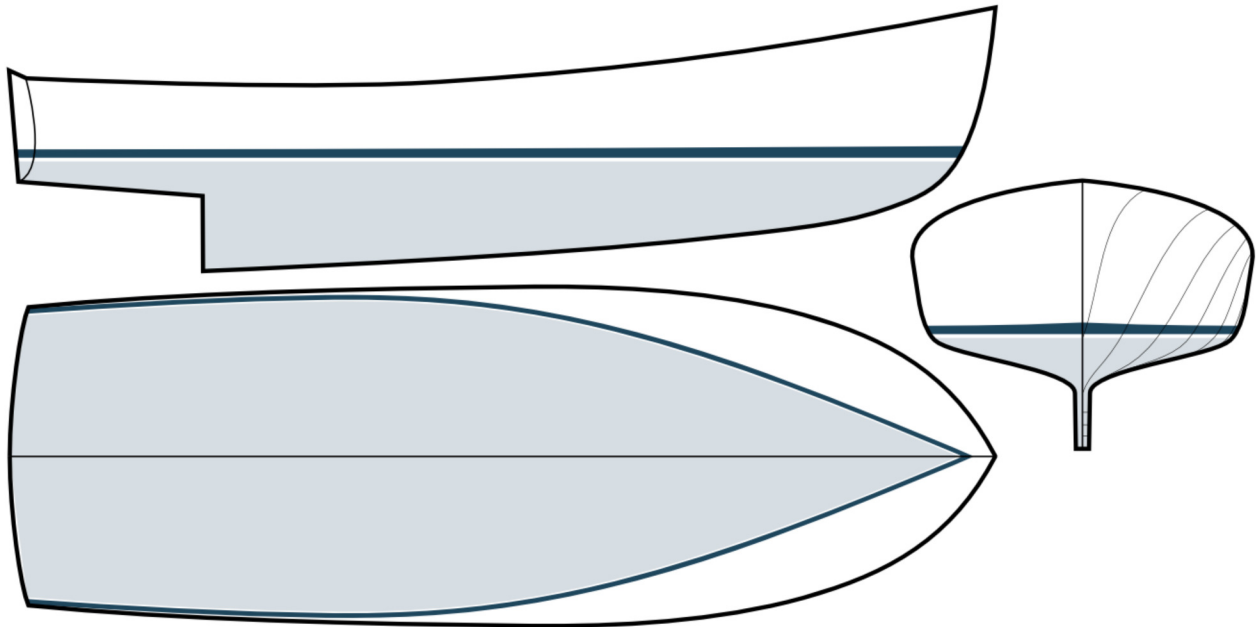


30

Jarvis Newman



SPECS	
LOA	30' 6"
LWL	29' 2"
BEAM	10' 8"
DRAFT	3' 4"
DISP*	10,500

*Displacement is an estimate based upon the original design specifications.

A little beauty goes a long way. "Little" is a relative term when talking about the Jarvis Newman 30. She's the smallest of the series, but by no means is she short on room when compared to other thirty-footers.

Configured as a cruiser, the Jarvis Newman 30 offers just the right amount of cabin space for comfortable nights aboard. Her compact size means easier handling and requires less power (and fuel, of course!) to get underway (a single diesel engine in the 300 - 500hp range is recommended). Other possibilities include bass boat and center console layouts, either making for a great dayboat with a wide-open cockpit for entertaining guests.

Call (781) 631-0192 to learn more.

Please visit us online at JarvisNewmanYachts.com

CW·HOOD
CUSTOM YACHTS

