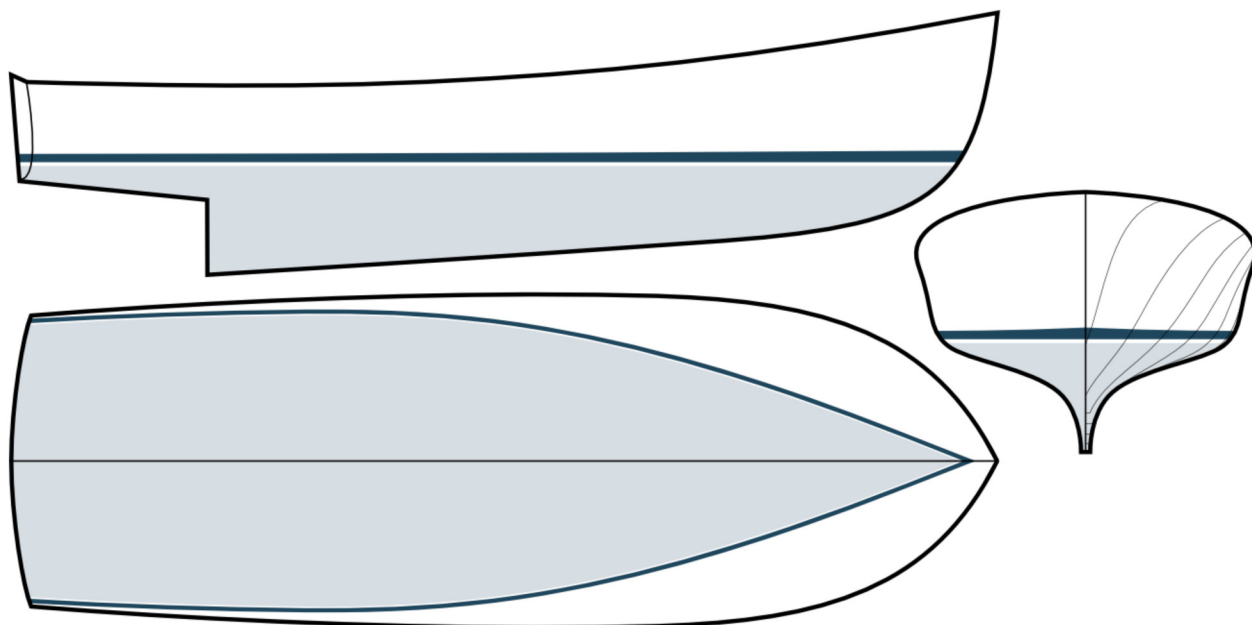


38

Jarvis Newman



SPECS	
LOA	38' 11"
LWL	37' 1"
BEAM	13' 5"
DRAFT	4' 5"
DISP*	22,000

*Displacement is an estimate based upon the original design specifications.

The big easy. The Jarvis Newman 38 is large enough to handle most any task, but with an overall length under forty feet she's nimble enough for a small crew, or even single-handed operation.

Her generous beam means lots of interior room for you and a couple of guests to enjoy overnight adventures aboard, and her deep keel keeps things steady underfoot, making for a safe dive or fish platform. With a seakindly Downeast hull, the Jarvis Newman 38 is best suited for a single engine installation. Modern marine diesel engines in the 500 - 700hp range should yield suitable cruising speeds, while keeping overall fuel consumption to a minimum.

Call (781) 631-0192 to learn more.

Please visit us online at JarvisNewmanYachts.com

CW·HOOD
CUSTOM YACHTS

