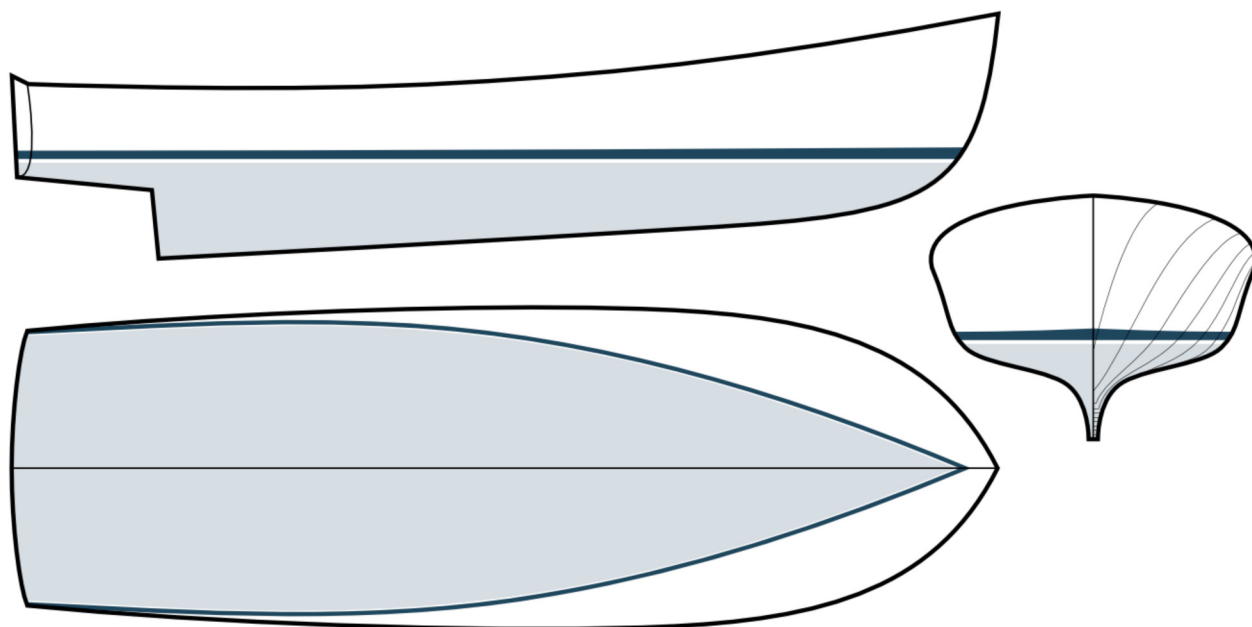


# 46

# Jarvis Newman



SPECS	
LOA	46' 0"
LWL	43' 10"
BEAM	15' 0"
DRAFT	4' 6"
DISP*	30,000

\*Displacement is an estimate based upon the original design specifications.

**A big hull for big ideas.** The Jarvis Newman 46 is the undisputed queen of the fleet. With a beam of fifteen feet, her interior volume can accommodate most any pursuit, be it completing the Great Loop or fishing the Grand Banks.

For the cruising enthusiast, there's plenty of space for guest staterooms, day and private heads, spacious pilothouse configurations, and more. While the hull is certainly beamy enough to fit twin engines, her design is best suited for a single engine installation. Modern marine diesel engines in the 700 - 1,000hp range should yield suitable cruising speeds, while keeping overall fuel consumption to a minimum.

**Call (781) 631-0192 to learn more.**

Please visit us online at [JarvisNewmanYachts.com](http://JarvisNewmanYachts.com)

**CW·HOOD**  
CUSTOM YACHTS

